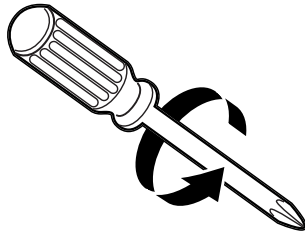


Battery Installation

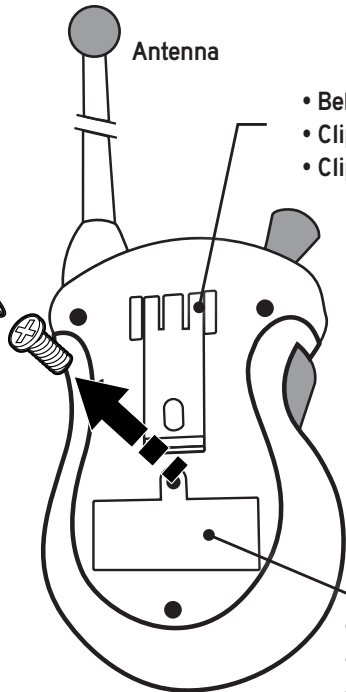
Installation de la Pile

Instalación de la Baterías

- Remove screw to lift cover.
- Retirez la vis pour soulever le couvercle.
- Retire el tornillo para levantar la cubierta.

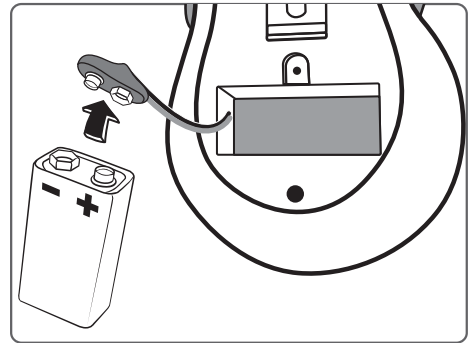


- Battery requirement:
2 x "9V" 6LR61
(not included)
- Piles requises :
2 x pile "9V" 6LR61
(non fournies)
- Baterías Requeridas:
2 x "9V" 6LR61 Bateria
(no incluidas)



- * Screwdriver not included
- * Tournevis non inclus
- * Destornillador no incluido

- Belt Clip
- Clip Ceinture
- Clip Para el Cinturón



- Battery Compartment
- Compartiment de Pile
- Compartimiento de Bateria